

Medical Neuroscience 552

Spring 2005

Questions from the
Laboratory Examination on Brainstem and
Cerebellum
on Friday, March 18, 2005

1.

THE BLUE PINS MARK WHICH
STRUCTURES?



1.
THE BLUE PINS MARK WHICH
STRUCTURES?



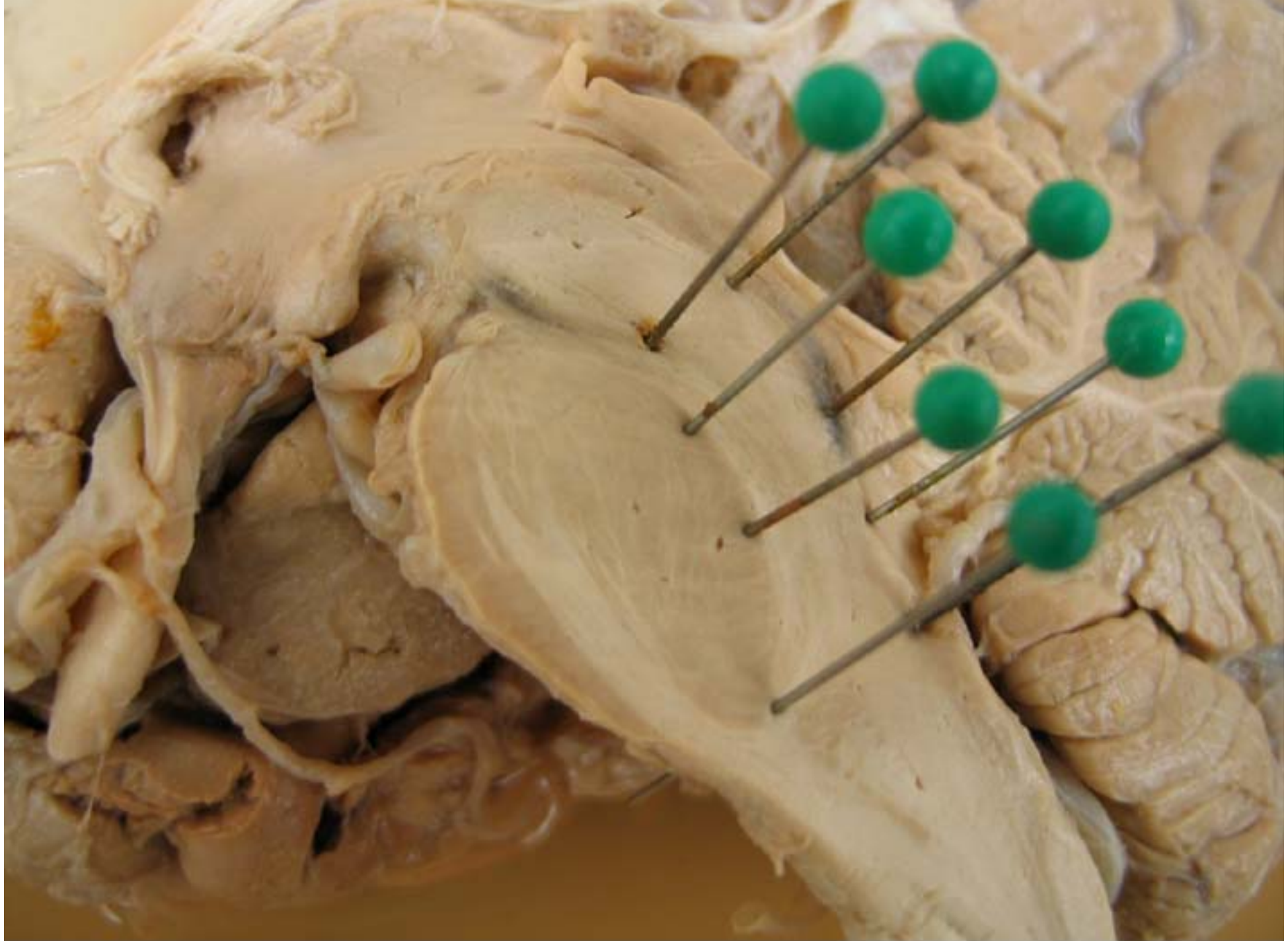
2.

NAME THE REGION MARKED BY
THE GREEN PINS

2.
NAME THE REGION MARKED BY
THE GREEN PINS





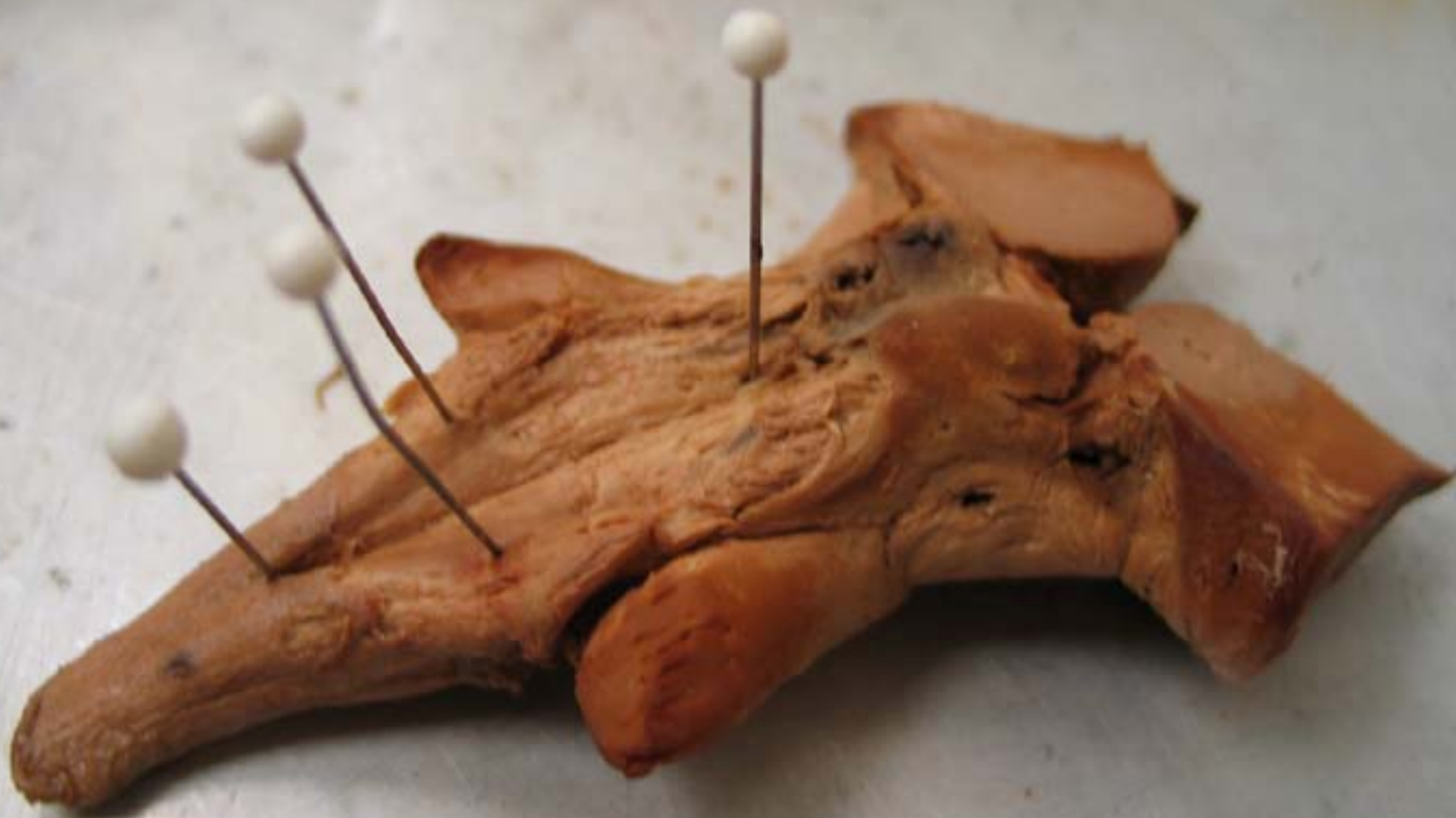


3.

THE WHITE PINS MARK THE
CORNERS OF WHICH SURFACE
FEATURE?

5.
THE WHITE PINS MARK THE
CORNERS OF WHICH SURFACE
FEATURE?







4.

NAME THE FIBER BUNDLE
MARKED BY THE YELLOW PINS.



4
NAME THE FIBER BUNDLE
MARKED BY THE YELLOW PINS.





5.

WHAT IS THE NAME AND THE
NUMBER OF THIS NERVE?



5.
WHAT IS THE NAME AND THE
NUMBER OF THIS NERVE?



6.

WHAT IS THE NAME AND THE
NUMBER OF THIS NERVE?



6.
WHAT IS THE NAME AND THE
NUMBER OF THIS NERVE?





7.

THE WHITE PINS ARE IN WHICH
LOBE OF THE CEREBELLUM?



7
THE WHITE PINS ARE IN WHICH
LOBE OF THE CEREBELLUM?





8.

THE YELLOW PINS ARE IN WHICH
PORTION OF THE POSTERIOR
LOBE?

★
THE YELLOW PINS ARE IN WHICH
PORTION OF THE POSTERIOR
LOBE?






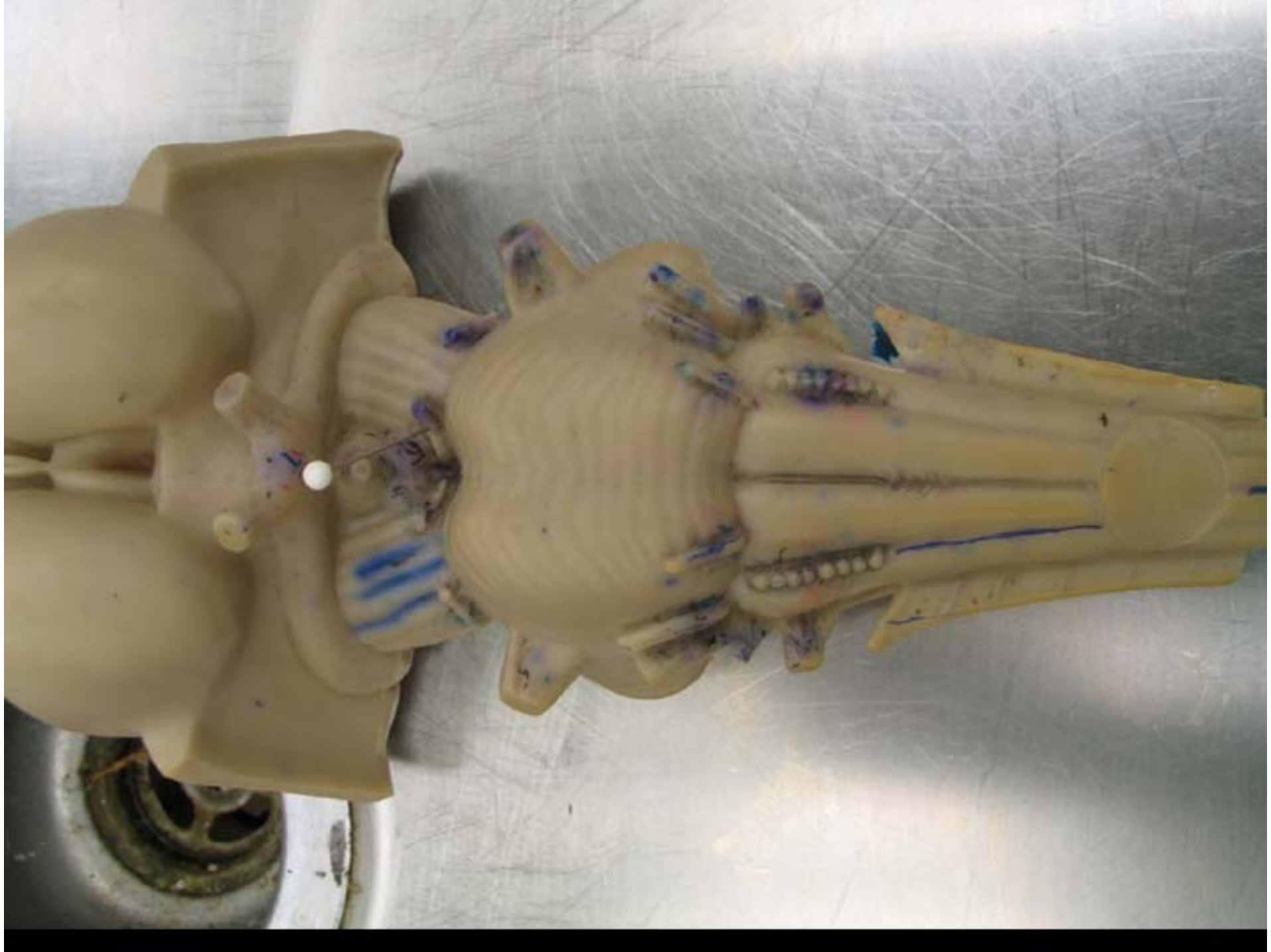


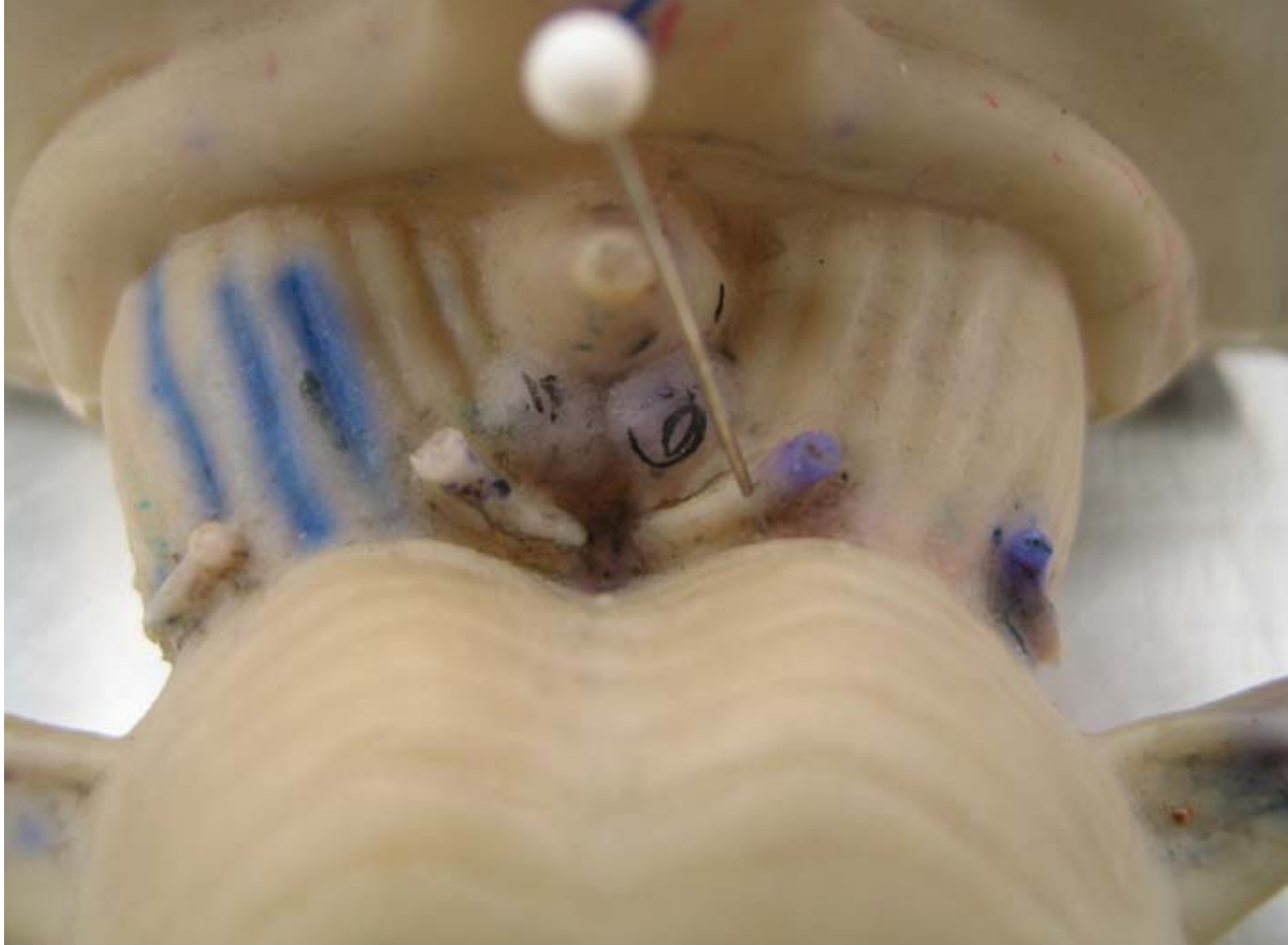
9.

WHAT IS THE NAME AND THE
NUMBER OF THIS NERVE?



9.
WHAT IS THE NAME AND THE
NUMBER OF THIS NERVE?





10.

NAME THE SURFACE FEATURE
MARKED BY THE WHITE PINS.



10.
NAME THE SURFACE FEATURE
MARKED BY THE WHITE PINS.



11.

THE PINK PINS ARE IN WHICH
PORTION OF THE TECTUM?

11.
THE PINK PINS ARE IN WHICH
PORTION OF THE TECTUM?







12.

NAME THE ARTERY MARKED BY
THE BLUE PINS.

12.

NAME THE ARTERY MARKED BY
THE BLUE PINS.

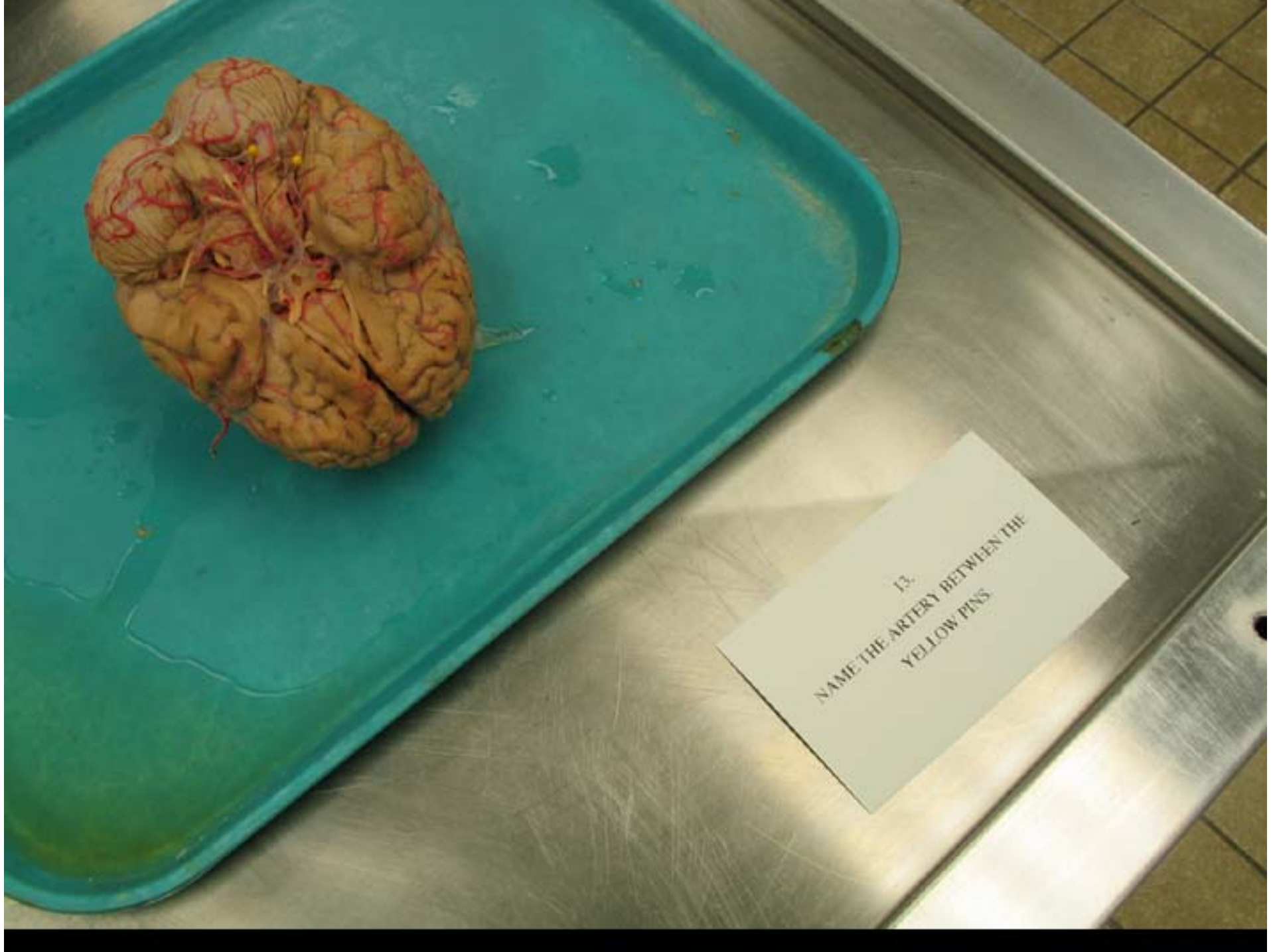




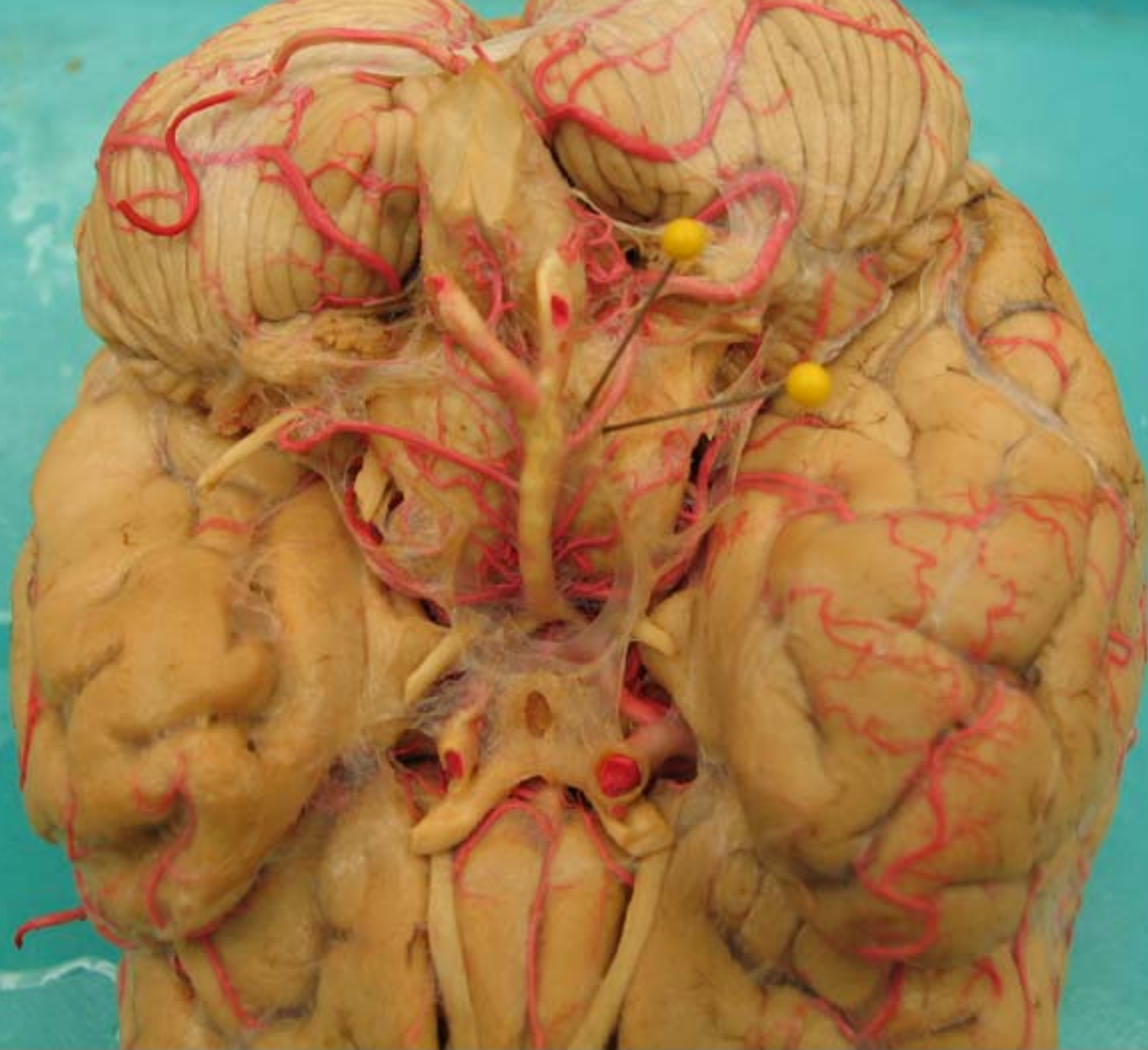


13.

NAME THE ARTERY BETWEEN THE
YELLOW PINS.



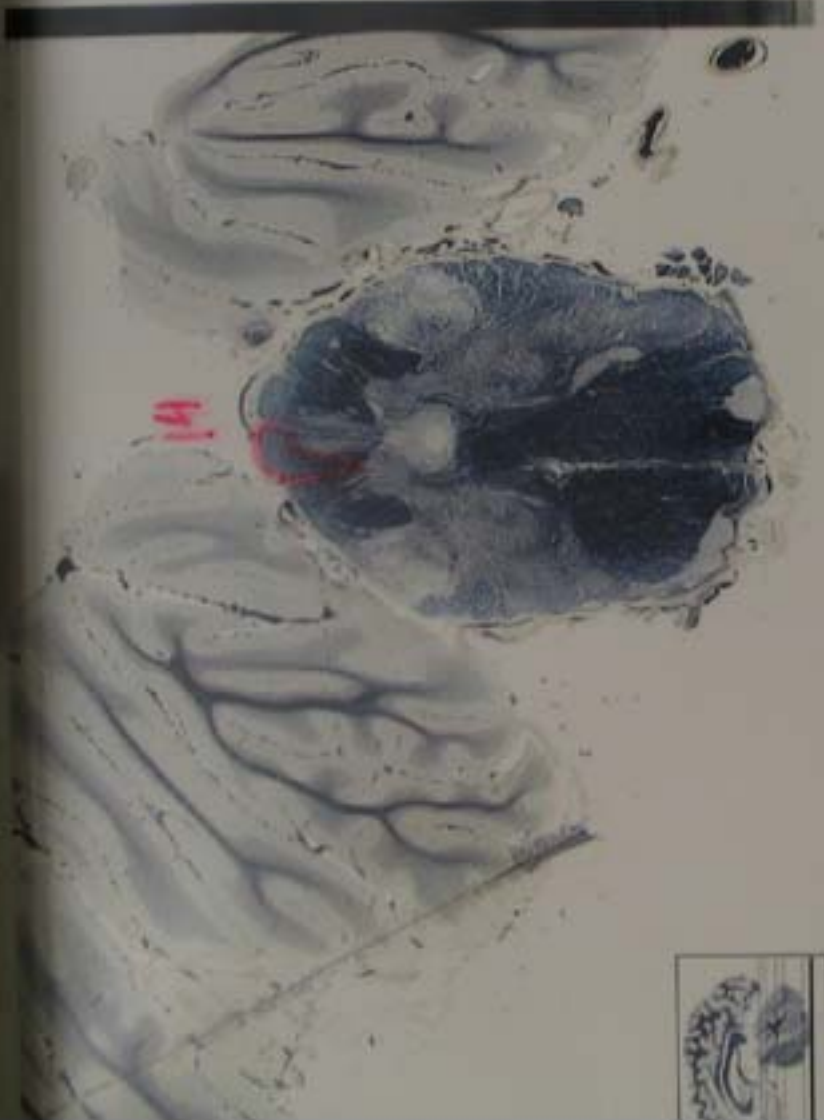
13.
NAME THE ARTERY BETWEEN THE
YELLOW PINS.






14.

NAME THE FIBER BUNDLE
OUTLINED IN RED.



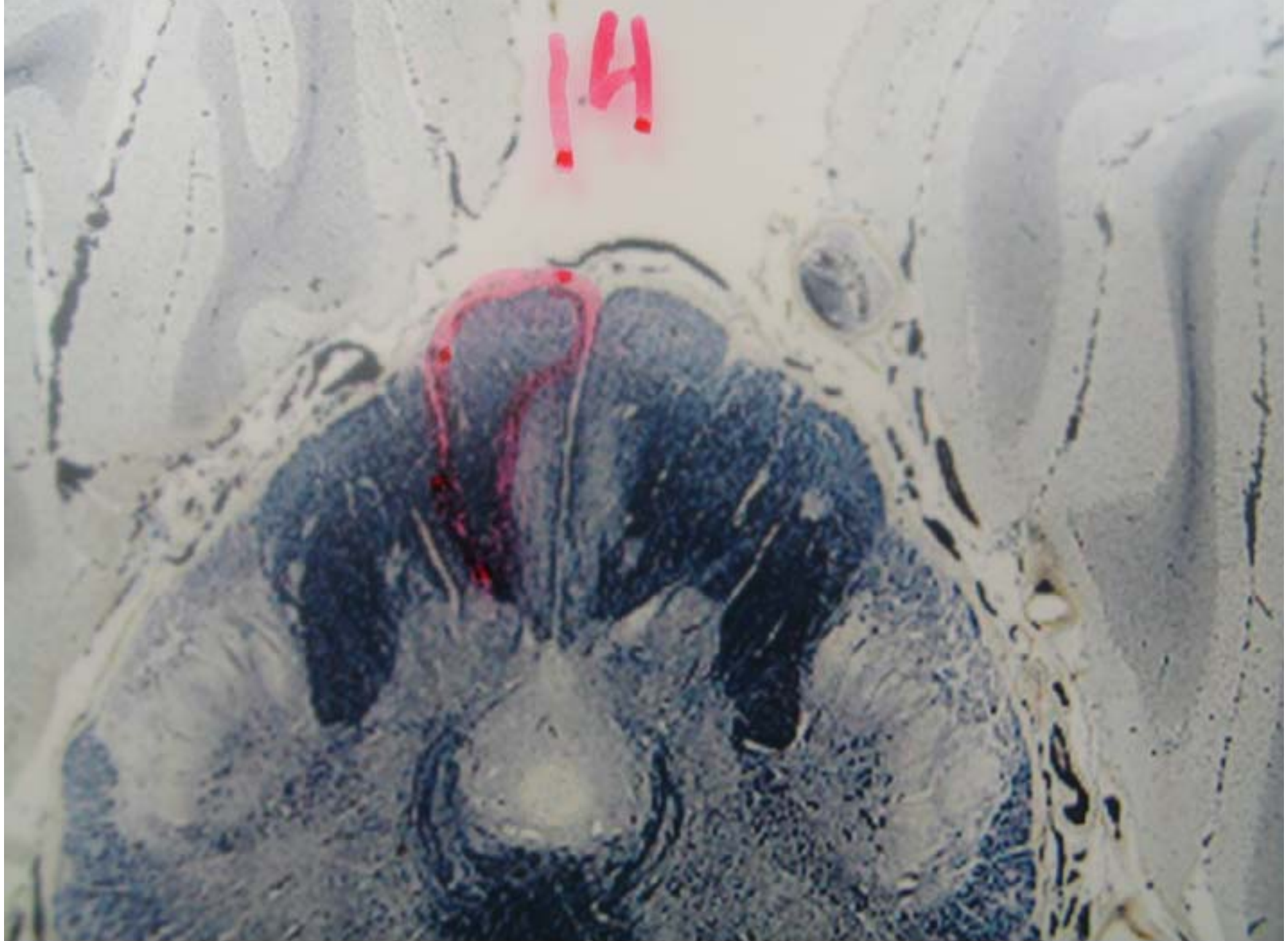
NOVLEV HALERM COLLECTION - SPECIMEN SP 18 - SECTION 2460

10 mm: 

14.
NAME THE FIBER BUNDLE
OUTLINED IN RED.



14



15.

THE RED ARROWS POINT TO
WHICH FIBERS?



COVLEY HALEEM COLLECTION - SPECIMEN SP 18 - SECTION 2460

10 mm:

15.

THE RED ARROWS POINT TO
WHICH FIBERS?





16.

NAME THE NUCLEUS OUTLINED IN
RED.



MICROSCOPIC COLLECTION - SPECIMEN SP 18 - SECTION 2261

10 mm

16.

NAME THE NUCLEUS OUTLINED IN
RED.

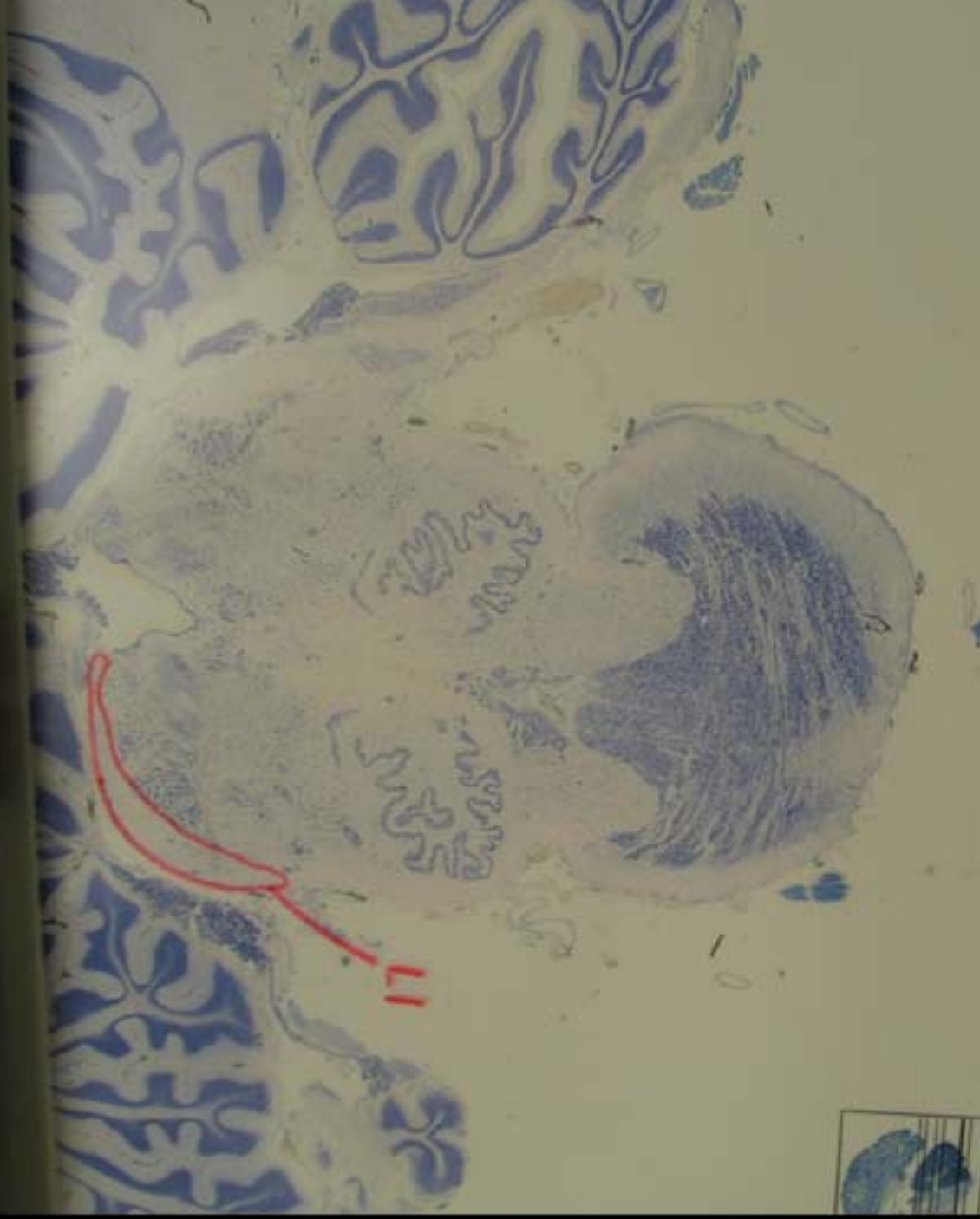




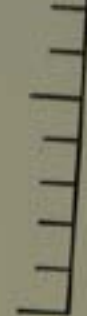
16

17.

NAME THE FIBER BUNDLE
OUTLINED IN RED.



LEEM COLLECTION - SPECIMEN SP 18- SECTION 2361

10 mm: 

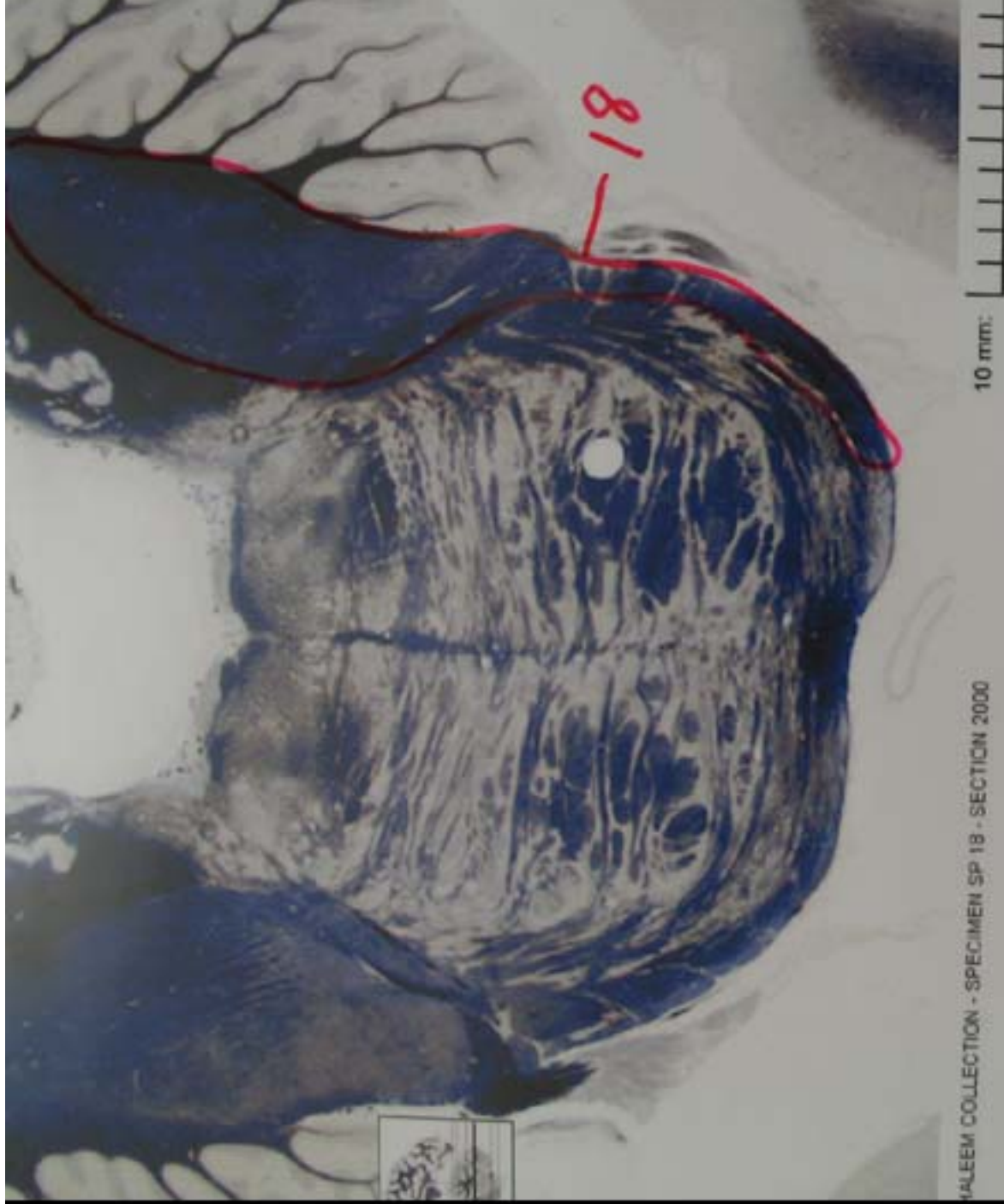
17.
NAME THE FIBER BUNDLE
OUTLINED IN RED.



17

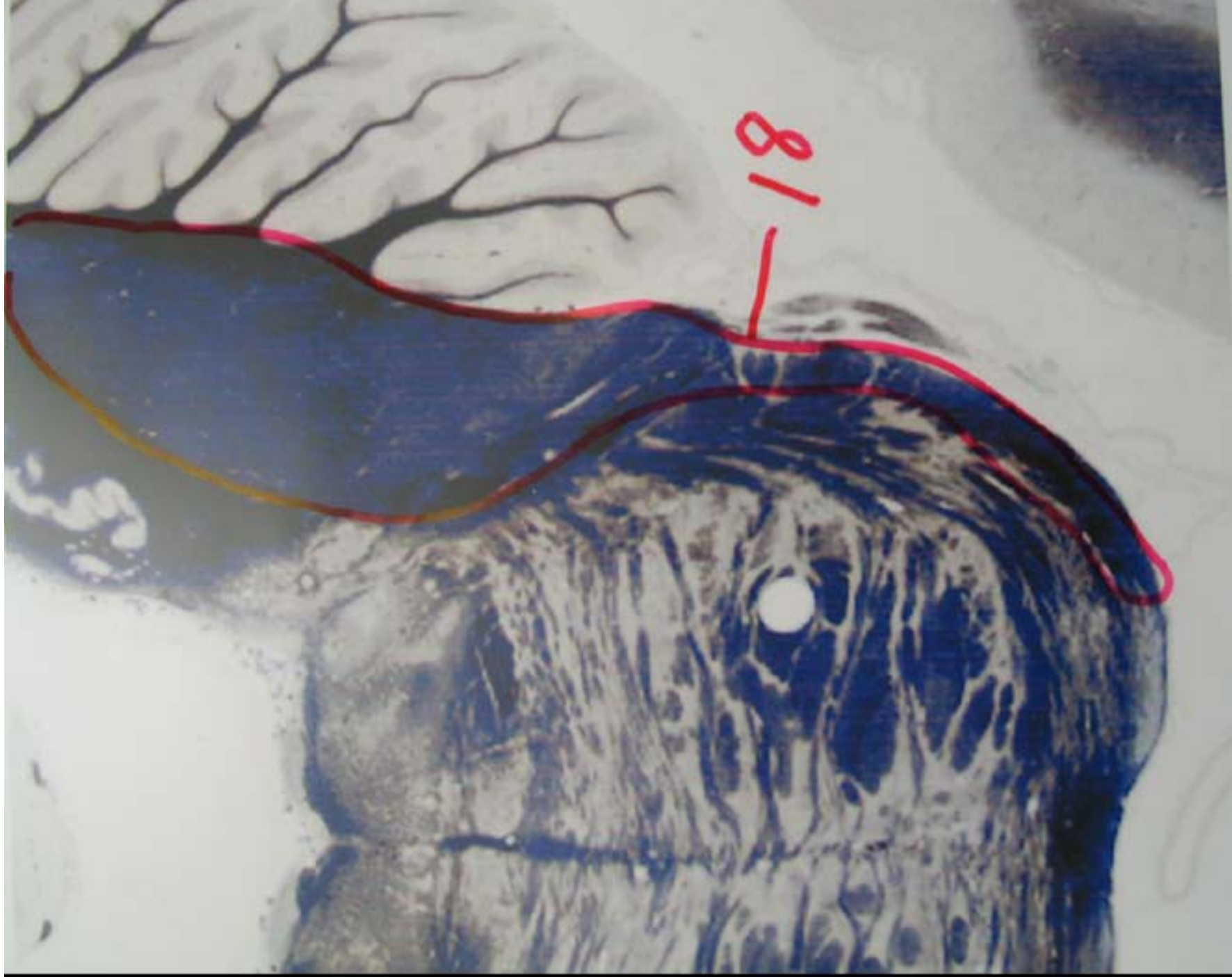
18.

NAME THE FIBER BUNDLE
OUTLINED IN RED.



18.

NAME THE FIBER BUNDLE
OUTLINED IN RED.



10 mm:

ON 2000

19.

NAME THE STRUCTURE OUTLINED
IN RED.



YADOLLEV HALEEM COLLECTION - SPECIMEN SP 19 - SECTION 1640

10 mm

19.
NAME THE STRUCTURE OUTLINED
IN RED.



20.

NAME THE REGION OF NEURONAL
CELL BODIES OUTLINED IN RED.



20.

NAME THE REGION OF NEURONAL
CELL BODIES OUTLINED IN RED.

20



This Slide Left Blank

- End of Exam